



**Operation Homefront (OH) provides emergency financial and other assistance to the families of our service members and wounded warriors.**

**[www.operationhomefront.org](http://www.operationhomefront.org)**



ALBERT HARRIS CENTER

# **BOARD OF HEALTH NURSE**

**WEDNESDAY, JUNE 17**

**10AM-12PM**

Drop in for a free health check up! Susan from the Board of Health will be here to check in with you!



**American  
Red Cross**

# **BLOOD DRIVE**



**Tuesday April 14 2pm-6:45pm**

**Saturday May 23 9am-2pm**

**Albert Harris Senior Center**

**37 Nashua Rd Pepperell, MA**

**Register with the Red Cross:**

**[https://www.redcrossblood.org/give.html/drive-  
results?zipSponsor=PEPPERELL](https://www.redcrossblood.org/give.html/drive-results?zipSponsor=PEPPERELL)**

**Or call: 800-RED-CROSS (800-733-2767)**



**Free Admission**  
**Family Friendly**

ALBERT HARRIS SENIOR CENTER

# ANNUAL CAR SHOW 2026

TUESDAY, JUNE 2<sup>ND</sup>

5:00-7:00PM

📍 37 NASHUA RD  
PEPPERELL, MA



📍 SPECTATOR PARKING AT 2 LOMAR PARK -  
FREE PARKING & SHUTTLE TO/FROM THE SHOW

RAIN DATE JUNE 9

**QiGong**

**Mondays and Wednesdays @ 10:30 AM,  
*online via Zoom***

**Meditation**

**Tuesdays @ 6:30 PM, in person**

**Bridge Club**

**Wednesdays @ 10:30 AM, in person**

**Cribbage Club**

**Second and Fourth Thursdays  
@ 6:00 PM**

**Go to [www.lawrencelibrary.org](http://www.lawrencelibrary.org) and click  
on **Event Calendar** for more information**

**Lawrence Library**

# FREEDOM

## DANCE

### COMMUNITY PERFORMANCE

**Wednesday**

**June 3**

**at 10AM**



This program is funded in part by a grant from the Pepperell Cultural Council, a local agency which is supported by Mass Cultural Council, a state agency.

Come see what our youth have been creating!

This FREE showcase features both works-in-progress and finished routines, all celebrating youth empowerment, creativity, and community.

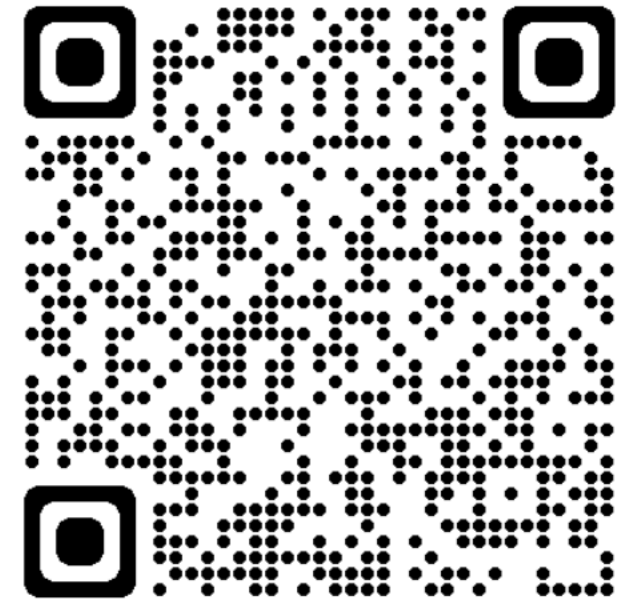
We invite you to relax, enjoy the show, and cheer on these inspiring performers!



# Weekly Addiction & Substance Use Support Groups

All are Welcome!  
Free & Open to the Public

- **Fitchburg Community Health Center**  
326 Nichols Road - Second Floor Conference Room #2  
**Every Tuesday, 9:30AM - 10:30AM**  
**Every Thursday, 3:30PM - 4:30PM**
- **Leominster Community Health & Urgent Care Center**  
165 Mill Street, Conference Room A  
**Every Tuesday, 5:00PM - 6:00PM**  
**Every Thursday, 10:30AM-11:30PM**
- **Greater Gardner Community Health Center**  
175 Connors Street, Third Floor Conference Room  
**Every Thursday, 9:30AM - 10:30AM**



Call us for more information

**978-878-8484**



**Information Session  
June 5  
10Am**



Breakfast available  
at 9:30am for \$4  
call for reservation

ALBERT HARRIS SENIOR CENTER  
37 NASHUA ROAD  
978 433 0326


# Lifeline

**WHAT IS A MEDICAL  
ALERT DEVICE?**

**HOW DOES IT WORK?**

**HOW CAN I GET ONE?**

**HOW MUCH DOES IT COST?**



ALBERT HARRIS CENTER

FRIDAYS

# STITCH & GAB

11am - 12:30pm

Every Friday we will gather to  
knit, stitch, or sew together!  
Call 978-433-0326 to sign up.

# Fraud & Scam Awareness



MONDAY JUNE 22  
10 am



**LOWELL FIVE BANK**

Bank outside the box.

# DID YOU SERVE IN THE MILITARY?

Your local *Veteran Service Officer* maintains a repository of Discharge Documents.

You can keep a copy of these important documents at your VSO's office for safe keeping. If you were released from the Army or Air Force before 1973 you may have the **ONLY** copy of these documents.



**Veteran Service Officer**  
**Town Hall**  
**1 Main Street**  
**Pepperell, MA 01463**  
**978-708-6932**



**Albert Harris Center**



# **Breakfast**

**Fridays at 9:30**

**Call 978-433-0326**

**by Thursday to reserve your spot.**





# VOILIN RECITAL

Monday June 29 at 1PM

Performance by  
9 year old Farrah & 11 year old Luke

# Card Making with Betty



Thursday  
May 28  
at 1pm

Free

Please sign-up at the front desk  
or call 978-433-0326

Albert Harris Senior Center ~ 37 Nashua Rd Pepperell, MA

Live at the  
**ANDRES**  
INSTITUTE OF ART



TICKETS ARE \$25  
GENERAL ADMISSION  
ORDER ONLINE  
ALL TABLE SEATING

# ACT I

## JANUARY - JUNE 2026 CONCERTS

AMAZING BANDS FROM A VARIETY OF GENRES  
FIND A FAVORITE OR TRY SOMETHING NEW!

**SOGGY PO BOYS**  
NEW ORLEANS JAZZ MARDI GRAS

**BRAD DUBAY**  
AMAZING GUITAR BLUES ROCK

**NE BLUEGRASS BAND**  
THE BEST IN REGIONAL BLUEGRASS

**PORTRAIT IN JAZZ**  
BOSTON AREA JAZZ QUINTET

**ACES AND EIGHTS**  
LEGENDAY LOCAL ROCK

**JAMDEMIC & MIGHTY COLORS**  
NH'S BEST CLASSIC ROCK & JAM ROCK

**COSMIC BLOSSOM**  
FUNK, SOUL & ROCK N ROLL

**THE COMPAQ BIG BAND**  
19 PIECE BIG BAND CELEBRATING 50 YEARS

**SAD BASTARDS & SEVENEIGHT**  
TWO POWERHOUSE JAZZ ACTS

AIA WELCOME CENTER  
BIG BEAR LODGE  
106 RT 13, BROOKLINE

**02/15**  
SUN 7-9PM

**02/28**  
SAT 7-9PM

**03/08**  
SUN 6-8PM

**03/22**  
SUN 6-8PM

**04/04**  
SAT 7-9PM

**04/18**  
SAT 7-10PM

**05/09**  
SAT 7-9PM

**06/06**  
SAT 7-9PM

**06/14**  
SUN 6-9PM



TICKETS AVAILABLE AT [ANDRESINSTITUTE.ORG](https://www.andresinstitute.org)

**Meal  
Assistance for  
Older Adults**

**Facing SNAP  
Uncertainty**



**Bring your DTA card to the Center to receive a meal punch card  
good for 5 free meals at the Center.**

Chef prepared meals. Lunch Mondays through Thursdays & Breakfast Fridays.  
Call 978-433-0326 for more information. Offer through Nov. 14<sup>th</sup>

**Flag Placing  
May 23, 2026  
9 AM  
All Cemeteries  
Volunteers  
Welcome**



JOSEPH E. RIPLEY  
1842 — 1907  
HIS WIFE  
EMMA J. RIPLEY  
1837 — 1914  
ARTHUR L. RIPLEY  
1875 — 1946

LORENZO S. BARTON  
1880 — 1973

W. E. CHAFFIN  
1864 — 1926

HELEN HOWELL  
1880 — 1921

# Card Making with Betty



**Thursday  
April 23 at 1pm**

Free

Please sign-up at the front desk  
or call 978-433-0326

Albert Harris Senior Center ~ 37 Nashua Rd Pepperell, MA

# Memorial Day Observations 2026



|           |           |                |   |
|-----------|-----------|----------------|---|
| Saturday  | 16<br>May | 08:00          | GWOT Monument- Flag placing   |
| Wednesday | 20<br>May | 08:00          | Albert Harris Senior Center- Lunch and presentation   |
| Thursday  | 21<br>May | 08:30          | North Middlesex Regional High School Memorial Day Presentation  |
| Friday    | 22<br>May | 08:15<br>09:45 | Nissitissit Middle School Memorial Day Presentation<br>Varnum Brook Elementary School Memorial Day Presentation |
| Saturday  | 23<br>May | 08:00<br>09:00 | Little Red Schoolhouse- DAR Presentation<br>Flag Planting in All Cemeteries                                     |
| Monday    | 25<br>May | 08:15<br>10:00 | Mass at St. Joseph's Cemetery<br>Memorial Day Parade- 1 Main St to 55 Leighton St                               |



**NEW**

# **Older and Living Alone** Support Group

**Katherine Pecorelli, MS, BSN**  
Navigate both the autonomy and  
challenges of living alone

**Meets Monthly**  
**1st Thursday, at 2:15pm**  
**call 978 433 0326**

ALBERT HARRIS SENIOR CENTER  
37 NASHUA ROAD, PEPPERELL

# HOT Lunch

at the  
Albert Harris Center  
978-433-0326

**SERVED MON-THURS AT 12PM.  
PLEASE SIGN UP BEFORE 10AM DAY OF.**

**COST IS: \$4**



# Going through a tough time? Help is here.

Are you or someone you care about struggling  
with mental health and/or substance use?

The Massachusetts Behavioral Health  
Help Line is here for you.



Call or text **833-773-2445**  
It's free, confidential, and no health insurance is needed.

BE6932-English

# Weekly Clubs

## **Mahjong**

Mondays & Wednesdays @ 1:30pm

## **Bridge**

Wednesdays @ 10:30am

## **Cribbage**

Thursdays @ 6pm

The Lawrence Library  
15 Main St.  
Pepperell, MA 01463



## The Massachusetts Behavioral Health Help Line is here.

- ✓ Deaf or hard of hearing? Contact MassRelay at 711.
- ✓ Real-time interpretation in 200+ languages.
- ✓ Chat at [masshelpline.com/chat](https://masshelpline.com/chat).

### Do you or a loved one need to see someone now?

Find your local Community Behavioral Health Center here.



MASSACHUSETTS  
**BEHAVIORAL  
HEALTH  
HELP LINE**

A yellow speech bubble graphic with a white outline, positioned to the right of the text "BEHAVIORAL HEALTH HELP LINE".

**833-773-2445**



# Employment and Volunteer Opportunities at Community Teamwork, Inc.

Community Teamwork was established in 1965 as part of President Lyndon B. Johnson's War on Poverty and the Economic Opportunity Act of 1964.

We mobilize resources for low-income people, and today we serve over 50,000 people in 63 cities and towns in Middlesex and Essex counties.

Community Teamwork offers a rewarding work environment and understands that our employees are our greatest asset. We provide competitive salaries and generous benefits including medical, dental, and 401K plans, tuition reimbursement, and liberal vacation and sick leave policies.

We have grown to become one of the largest employers in the City of Lowell, employing over 500 full and part-time members of our community. To explore employment and volunteer opportunities, please visit [www.commteam.org](http://www.commteam.org)



The Albert Harris Center

# Caregiver Support Group

with Katherine Pecorelli MS, BSN

1ST  
WEDNESDAY  
OF EVERY  
MONTH

*Albert Harris Center*

# Cards & Games

**Hand & Foot - Mon at 9am**

**Scrabble - Fri at 10:30am**

**Cribbage - Tues at 8:30am**

**Card Bingo - Wed at 9am**

**Bingo - Wed at 12:45pm**

**Poker - Thurs at 8:30am**



Albert Harris Center

# Transportation

**VAN LINE: 978-433-0326 x2008**

**Call to schedule a ride for medical appointments, errands, & shopping.**



## Fare-Free Pilot Program

- Free fare is subject to state funding.
- Day trips and outings are excluded from this fare-free program.
- Long distance trips are accommodated when possible. Rates may vary.



The Town of Pepperell and Big Brother and Big Sister Foundation

have created a new partnership to enable residents to easily donate their clothing, textile and small household items.



Bins will be placed at the Pepperell Transfer Station (for residents who obtain stickers ONLY) and at the Albert Harris Center for all residents. Please, no junk, soiled or unusable items.

95% of the clothing discarded each year is able to be reused or recycled.



We are making donating easy. Residents can schedule a free home pick up by calling 508-466-4590 or schedule on-line at [BBBSFoundation.org](http://BBBSFoundation.org)

Big Brother Big Sister Foundation has been collecting these items across Massachusetts for 25 years.

**Jennifer McGowan's  
Creative Dance Center**  
*Pepperell Recreation Department*



**Fall Registration  
is  
Open**

**[www.creative-dance.com](http://www.creative-dance.com)**

**[https://pepperellma.  
myrec.com](https://pepperellma.myrec.com)**

***Where dance is for everyone and everyone can dance!***

# Tai Chi Tuesdays at 2PM



**Starts February 3rd**  
**Free for the month of February**

Albert Harris Senior Center  
37 Nashua Road Pepperell

**Albert Harris Center**

# Paint and Sketch

Thursdays  
@11am

Drop in, it's free!

# Concerned About Someone's Drinking?

Does someone's drinking bother you? Al-Anon is a support program for friends and relatives of alcoholics. Find online and in-person meetings in your local area at [alanonma.org](http://alanonma.org). For more information call 508-366-0556, Monday–Friday 9:00–4:00.

You are not alone.



Albert Harris Center

# SHINE

(Serving Health Information Needs for Everyone)  
Medicare Assistance



**By Appointment  
Only**

**978-433-0326**

Counselors Jean Emerson and David Chenelle are here to navigate you through the Medicare process. Please call 978-433-0326 to make an appointment.

[www.shinema.org](http://www.shinema.org)



**NEW**

# **Older and Living Alone**

Support Group

**Katherine Pecorelli, MS, BSN**  
Navigate both the autonomy and  
challenges of living alone

**Starts Thursday January 8 at 2pm**

ALBERT HARRIS SENIOR CENTER  
37 NASHUA ROAD, PEPPERELL

## **With your library card, you can:**

- Stream movies through Kanopy
- Get discount museum passes
- Check out a WiFi hotspot or a video game
- Get a kit to help start your first D&D campaign
- Download eBooks and eAudiobooks
- Learn a new language with Transparent Language
- Search the Boston Globe or New York Times archives

**And so much more, all for free!**

Lawrence Library ★ 15 Main Street, Pepperell, MA  
978-433-0330 ★ [www.lawrencelibrary.org](http://www.lawrencelibrary.org)

The Albert Harris Center  
978-433-0326

Every Tuesday @ 11:00am

# WALKING CLUB

(Weather Permitting)

Get some exercise and fresh air!  
Meet at the Town Field Walking Track  
at 11am to walk as a group!

ALBERT HARRIS CENTER

# Elaine's Exercise

MONDAYS AND FRIDAYS

@ 11:10AM

Cost is \$4.



**Are you over the age of 65?**

## **IMPORTANT NUMBERS**

- Elder Abuse Hotline 1-800-922-2275
- Executive Office of Elder Affairs 1-617-727-7750
- Fuel Assistance 1-978-342-4520
- Aging Services 1-978-537-7411
- Nashoba Nursing Service 1-978-425-6675
- PACH Food Pantry 1-978-925-9770
- SHINE Medicare Counseling 1-508-422-9931
- Meals on Wheels 1-800-286-3441



*Albert Harris Center*



# Intro to Dungeons & Dragons

We'll meet *every Wednesday* from  
6:30-8:00 p.m., beginning December 7th

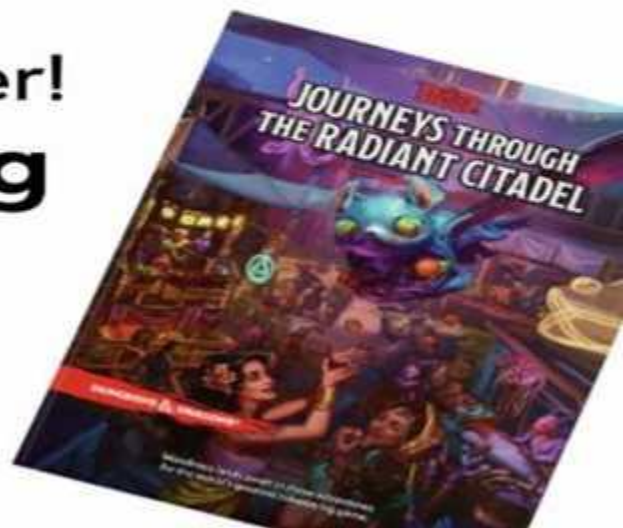
Open to ages 12+

Space is very limited - please register!

[www.lawrencelibrary.org](http://www.lawrencelibrary.org)



The Lawrence Library  
15 Main Street  
Pepperell, MA  
978-433-0330





**Children living in more than 90 homeless shelters across MA count on our volunteers. Can they count on you?**

## **Volunteer to Play**

**Can you spare 2 hours a week to play with homeless children in your local area and make a lifetime of difference?**



---

**HORIZONS  
FOR HOMELESS  
CHILDREN®**

**Give. Volunteer. Connect.**

**Call 774.260.2612 or visit**

**[Horizonschildren.org/playspace](https://Horizonschildren.org/playspace)**

# *Dial-a-Story*

**Call 978-755-2755**

for stories, poetry, and jokes for all ages!



Try our fun new service - make a free, local call, and choose from a selection of pre-recorded stories and more. New content will be added periodically.



*Town of Pepperell*

**BOARD OF HEALTH**

[health@town.pepperell.ma.us](mailto:health@town.pepperell.ma.us)

## **COVID-19 VACCINE INFORMATION**

**PLEASE REFERENCE THE LINK BELOW  
FOR CURRENT VACCINE INFORMATION**

[www.mass.gov/covid-19-vaccine](http://www.mass.gov/covid-19-vaccine)

**PEPPERELL**  
Public Access

# PACH

## FOOD PANTRY

Drop off location:  
**Albert Harris Center**  
**37 Nashua Rd.**  
**Pepperell, MA**



**PEPPERELL**  
Community  
Media

**Your TV station for  
information about Pepperell  
and surrounding towns**

**Public Events and Concerts,  
Educational, and  
Government Programs.**

***Come find us on:***

- **WEB at [www. PepperellChannel.org](http://www.PepperellChannel.org)**
- **ROKU ... search for "Pepperell Community Media"**
- **FACEBOOK ... search for "Pepperell Community Media"**
- **Charter/Spectrum Cable TV ... click to Channels 192 & 194**



Albert Harris Center

978-433-0326

# *Bonding Through Books*

Book: *The Well-Lived Life*

**FRIDAYS @ 9AM**

**CONNECT THROUGH DISCUSSIONS**

A chapter will be read out loud each week and then discussed in group.

No need to purchase anything.

Join anytime!

# Join the fun!

## Friends of the Nashua River Rail Trail



[www.fnrirt.org](http://www.fnrirt.org)

# Walk and Bike Pepperell

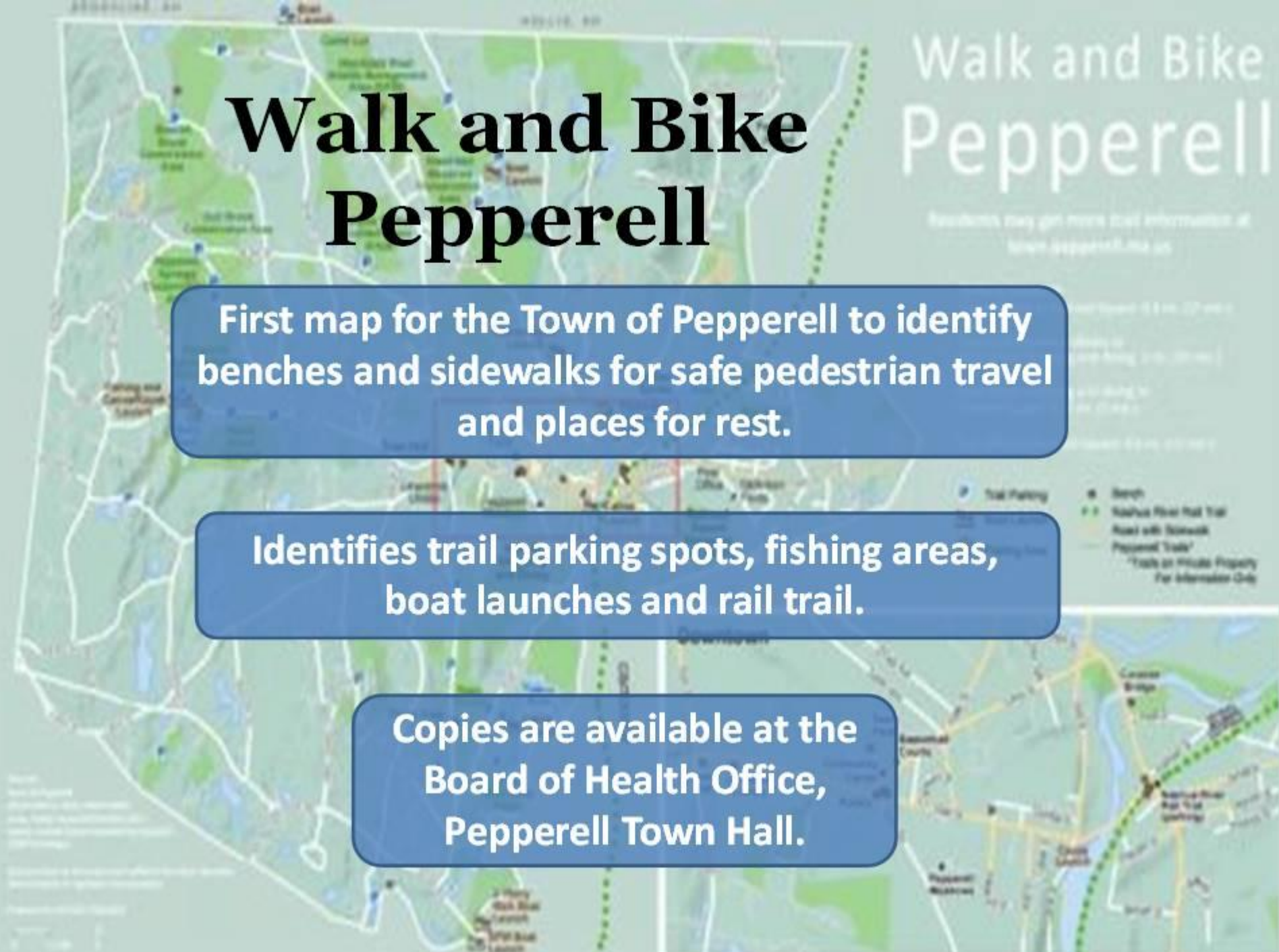
## Walk and Bike Pepperell

Residents may get more local information at  
[town.pepperell.ma.us](http://town.pepperell.ma.us)

First map for the Town of Pepperell to identify benches and sidewalks for safe pedestrian travel and places for rest.

Identifies trail parking spots, fishing areas, boat launches and rail trail.

Copies are available at the Board of Health Office, Pepperell Town Hall.



**We're committed to  
affordability!**

*[www.applewild.org](http://www.applewild.org)*

**APPLEWILD**  
SCHOOL

- ▶ **AppleCore Scholarships  
for grades 4-7**
- ▶ **Early Childhood Scholarships  
for grade 2**
- ▶ **Enhanced Financial Aid**



Albert Harris Center

Free!

# Folk

# Dancing

with Nancy

Tuesdays @ 11am



# **PROFESSIONAL PODCASTING & VIDEOGRAPHY INTERNSHIP**

**for Sophomores and Juniors**



- Learn to use professional cameras and audio gear
- Get a head start in broadcasting and media
- Create your own content, guided by the expertise of your local public access channel
- Get school credit for your work
- It's FREE

Contact Gerry Couper at [gcouper@pepperellchannel.org](mailto:gcouper@pepperellchannel.org)



**PACH**  
**OUTREACH**

## **PACH Donations Needed!**

**Pepperell Aid from Community to Home**

**The Senior Center will continue to be a drop off location for PACH, our food pantry here in Town. They are currently in need of condiments and are always accepting donations of nonperishable items and canned goods. All items need to be new and non-expired.**

**There is a donation bin in the lobby for the donated items.**

ALBERT HARRIS CENTER



**Volunteers  
Needed!**

**LOOKING FOR:**

- **Wednesday Dunkin Donuts run**
- **Substitute Meals-on-Wheels Drivers**
- **Front Desk Support**
- **Lunchtime Volunteer to collect money**
- **Kitchen Clean-up Crew**

Please contact Jennifer if interested!

978-433-0326

LIVE@LAWRENCE LIBRARY

**OPEN MIC**

**LIVE CONCERTS**

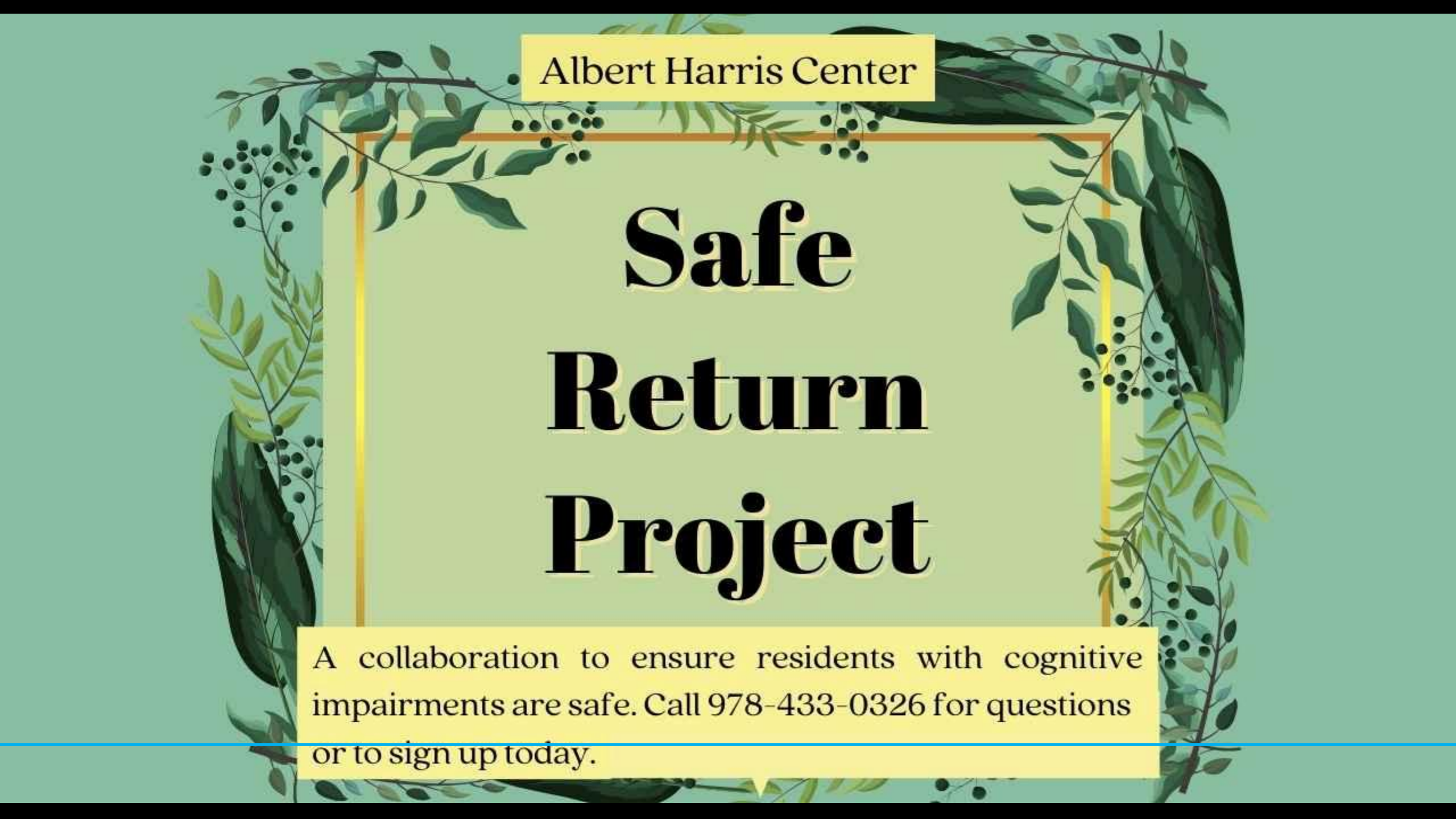
Free and open to the public

Doors open at 6:30 pm

Funded by the Friends of  
the Lawrence Library

3<sup>rd</sup> Friday of the month





Albert Harris Center

# Safe Return Project

A collaboration to ensure residents with cognitive impairments are safe. Call 978-433-0326 for questions or to sign up today.

Albert Harris Center

# Meditation

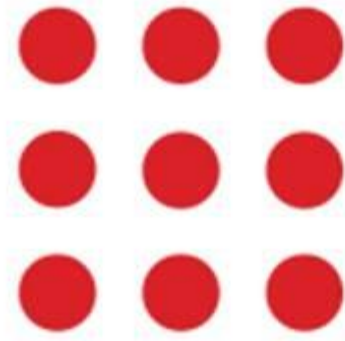


with Jeanelle

via zoom!

Mondays @ 2 pm





# Veterans Crisis Line

1-800-273-8255 **PRESS 1**

Confidential crisis chat at

[VeteransCrisisLine.net](https://VeteransCrisisLine.net)

or text to **838255**



Albert Harris Center 978-433-0326

*Cost for all is \$4. Please call to sign up.*

# *Yoga with Elise*

THURSDAYS @ 9 AM





# NCTI

Nashoba Career Technical Institute

*A plan for today, skills for tomorrow.*

[www.nashobatech.net](http://www.nashobatech.net)  
978.692.4711



The technical programs at NCTI offer a great way to take that first step into a rewarding and long-lasting career.

- Free Enrollment
- At-Work Learning
- Technical Certificate
- Licensure Preparation
- Career Support
- Industry Connections
- College Credit

For a complete list of technical programs, call 978.692.4711 x1115 or visit [www.nashobatech.net](http://www.nashobatech.net) for more information or to schedule a tour.

# DEVENS HHW

## Devens Regional Household Hazardous Products Collection Center

Open to residents and pre-qualified businesses of member towns only:

Ashby – Ayer – Bolton – Clinton – Devens – Groton – Harvard – Lancaster  
Littleton – Lunenburg – Pepperell – Shirley – Stow - Townsend



Open the first Wednesday and the following Saturday, 9 AM to 1 PM, March to December, except for holidays and weather permitting

Some fees may apply. For info and list of acceptable items, visit [www.devenshhw.com](http://www.devenshhw.com)

**We thank the Massachusetts Department of Environmental Protection for grant funding that helped establish this facility.**

Discover your  
family history



 **ancestry** Library™

Browse more than 20 billion records  
online at the Lawrence Library

LAWRENCE LIBRARY

# Please join us

The Pepperell Cultural Council is looking for  
**new members**

To learn more, visit

[www.mass-culture.org](http://www.mass-culture.org)

We support community-based arts,  
humanities, and science projects,  
promoting rich cultural experiences.

Write to:  
PCC  
Town Hall  
1 Main Street  
Pepperell, MA  
01463

